
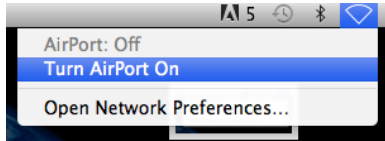


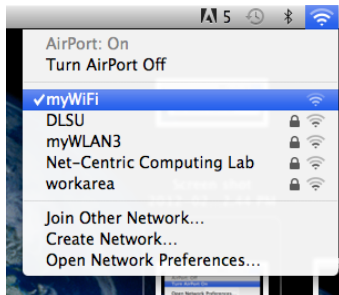
WiFi Configuration for Mac

Internet-capable laptop – For Mac

1. Click Airport icon  in the Status menu located on the upper left side of the desktop.
2. Click **Turn AirPort On**.




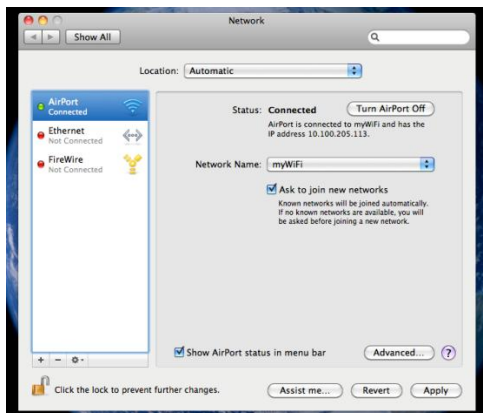
3. Click Airport icon  in Status menu. Available wireless network connections will appear. Select **myWiFi**.



4. Type **accessingwifi** in Password field. Tick the **Show password** and **Remember this network** check box. Click **OK**.

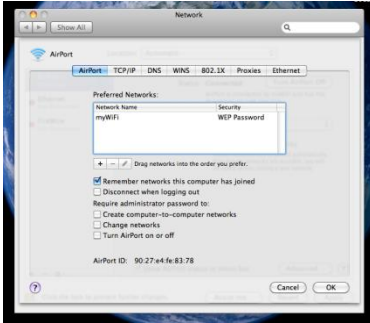


5. Click Airport icon  in the Status menu. Click **Open Network Preferences**.
6. In the Network window, tick the **Ask to join new networks** check box. Click **Advanced**.



7. Lastly configure the proxy settings

- a. In the **Airport** tab, tick the **Remember networks this computer has joined** check box.



- b. Click **Proxies** tab. Tick the **Automatic Proxy Configuration** check box and type **http://wpad.dlsu.edu.ph** in URL field. Under Bypass proxy settings, type ***.dlsu.edu.ph**. Click **OK**.



- c. Click **Apply**.

- d. If your browser is Mozilla Firefox, follow these additional steps:

- 1. Open **Mozilla Firefox**. Go to **Firefox** and click on **Preferences**.



- 2. In the **Advanced** window, click **Advanced** tab. In the **Network** tab, click **Settings**.

- 3. Tick the **Use system proxy settings** radio button. Click **OK**.

