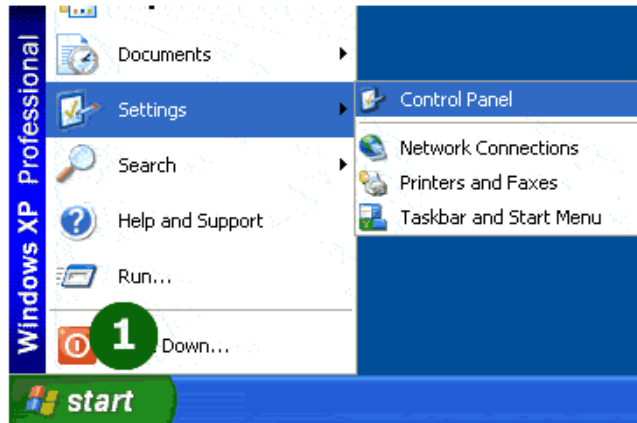


DIAL-UP GUIDE FOR FACULTY MEMBERS USING WINDOWS XP

- I. How to configure the components for PPP connection for Windows XP
 - II. How to connect to DLSU via Networking
 - III. How to end connection
-

I. How to configure the components for PPP connection for Windows XP

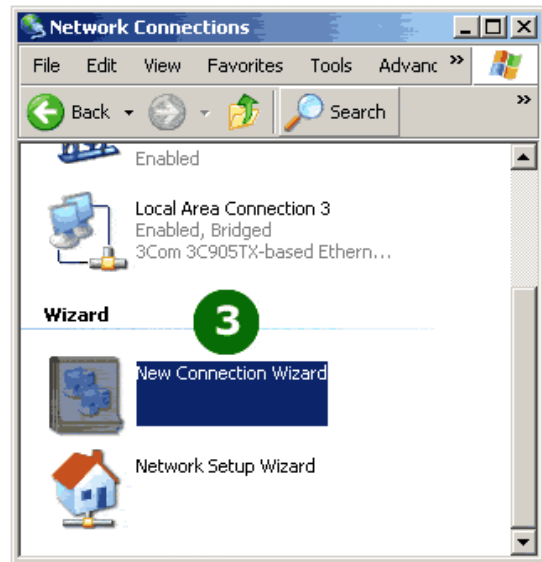
1. Click **Start**, point to **Settings** then click **Control Panel**.



2. Double-click the **Network and Dial-up Connections** icon.



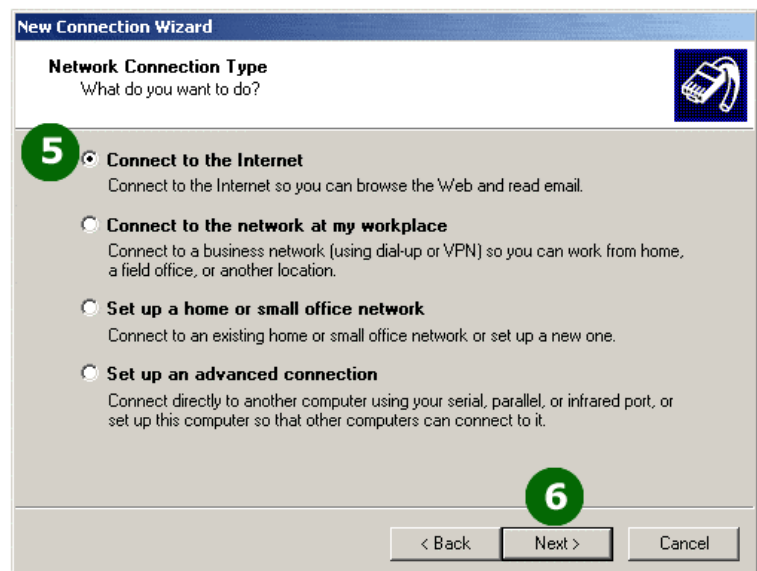
3. Double-click **New Connection Wizard**.



4. Click **Next**.

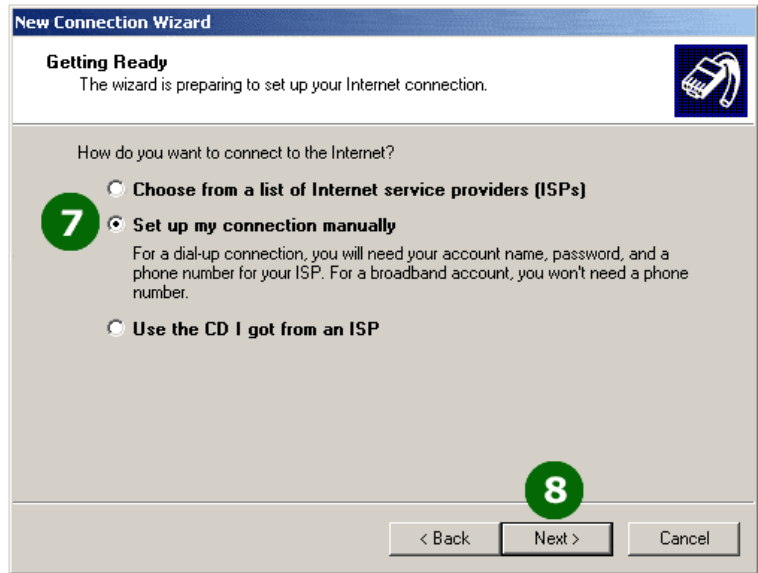


5. Tick the **Connect to the Internet** option.



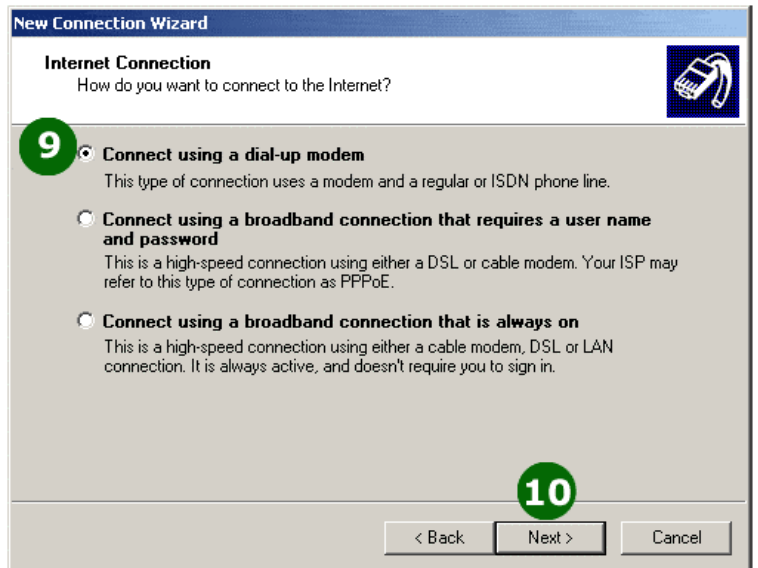
6. Click **Next**.

7. Tick the **Set up my connection manually** option.



8. Click **Next**.

9. Tick the **Connect using a dial-up modem** option.



10. Click **Next**.

11. Type a name for your new connection. (Ex. **Connection to DLSU**)

New Connection Wizard

Connection Name
What is the name of the service that provides your Internet connection?

Type the name of your ISP in the following box.

ISP Name

Connection to DLSU

The name you type here will be the name of the connection you are creating.

< Back Next > Cancel

12. Click **Next**.

13. Enter the dialup number: **522-3277**

New Connection Wizard

Phone Number to Dial
What is your ISP's phone number?

Type the phone number below.

Phone number:

5223277

You might need to include a "1" or the area code, or both. If you are not sure you need the extra numbers, dial the phone number on your telephone. If you hear a modem sound, the number dialed is correct.

< Back Next > Cancel

14. Click **Next**.

15. Enter **<User ID>@dlsu** as your username, and key-in your password.

New Connection Wizard

Internet Account Information
You will need an account name and password to sign in to your Internet account.

Type an ISP account name and password, then write down this information and store it in a safe place. (If you have forgotten an existing account name or password, contact your ISP.)

User name: soriant@dlsu

Password:

Confirm password:

Use this account name and password when anyone connects to the Internet from this computer

Make this the default Internet connection

Turn on Internet Connection Firewall for this connection

< Back Next > Cancel

16. Click **Next**.

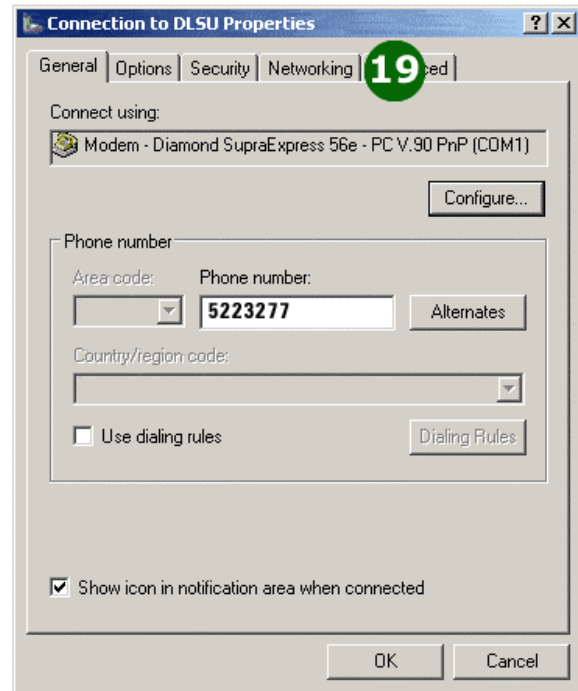
17. Click **Finish** to save the connection.



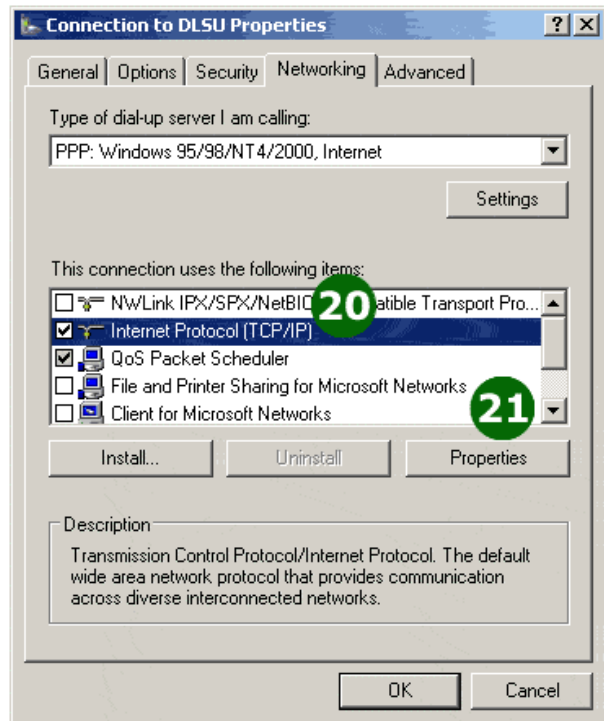
18. Click **Properties**.



19. Click the **Networking** tab.



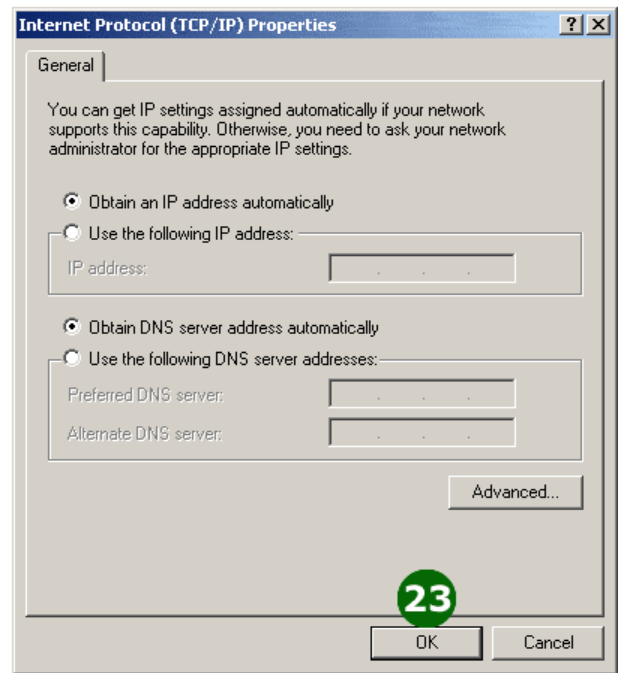
20. Click the **Internet Protocol (TCP/IP)** component.



21. Click **Properties**.

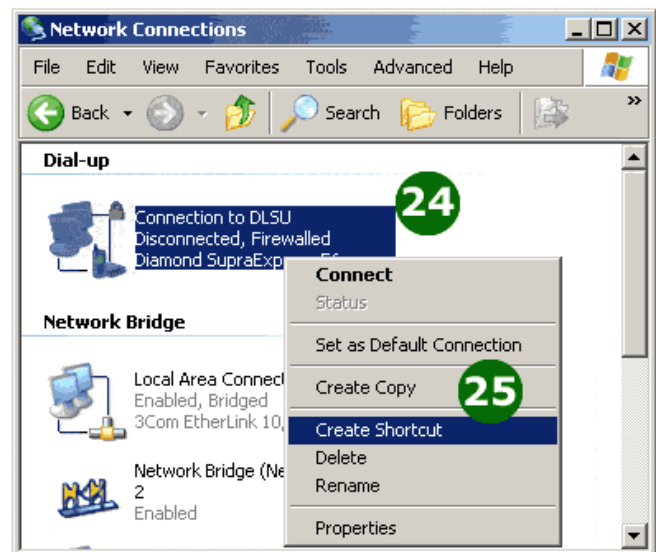
22. Configure the TCP/IP settings as shown in the figure.

23. Click **OK** twice to go back to the **Network Connections** window.

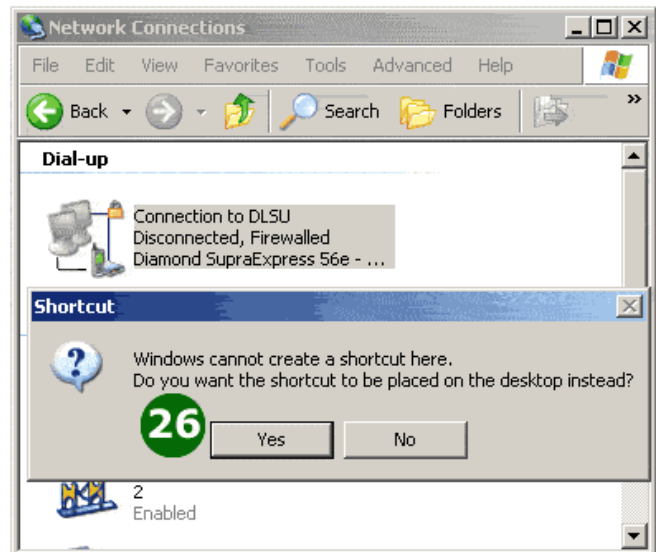


24. Right-click the **Connection to DLSU** icon.

25. To create a shortcut on your desktop, click **Create Shortcut**.



26. Click **Yes** when asked whether the shortcut should be placed on the Desktop.



II. How to connect to DLSU via Networking

1. Double-click the **Shortcut to Connection to DLSU** icon on the desktop.



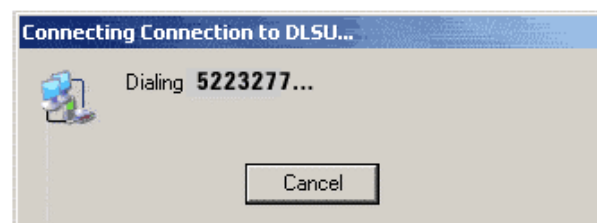
2. Enter **<User ID>@dlsu** as your username, and key-in you password.



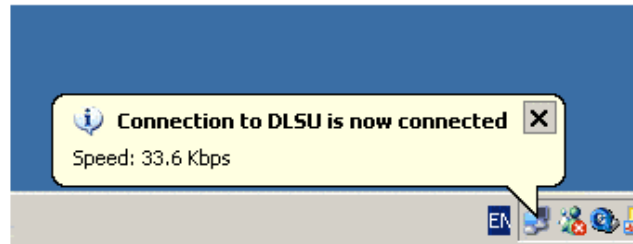
3. Click **Dial**.

When you see this prompt, it means that the modem is dialing.

Note: If the line is busy, please try again.

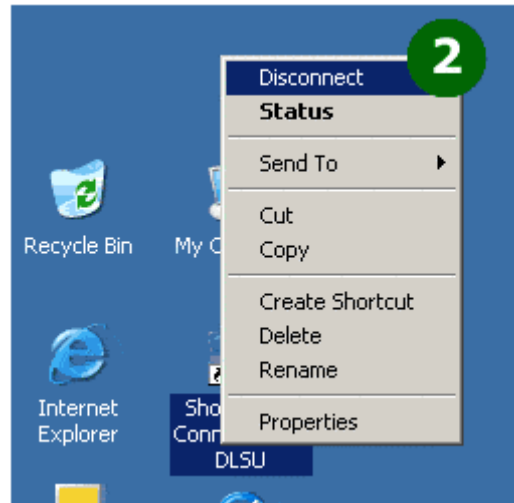


If you see the message "**Connection to DLSU is now connected**" at the notification area of your taskbar, it means that you have successfully connected to **DLSU via PPP**.



III. How to end connection

1. Right-click the **Shortcut to Connection to DLSU** icon on your desktop.
2. Click **Disconnect**.



Dial Up Number for Faculty: 522-3277