

How to connect to DLSU via Networking

1. Double-click the **Shortcut to Connection to DLSU** icon on the desktop.

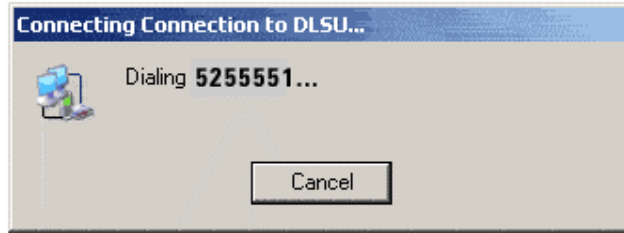


2. Enter **<ID number>@dlsu** as your username, and key-in your password.

3. Click **Dial**.



When you see this prompt, it means that the modem is dialing.



Note: If the line is busy, please try again.

If you see the message "**Connection to DLSU is now connected**" at the notification area of your taskbar, it means that you have successfully connected to **DLSU via PPP**.

