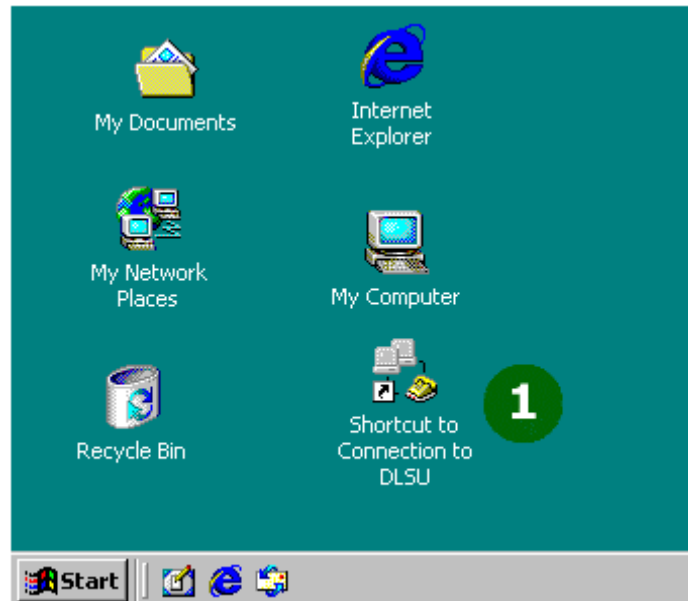


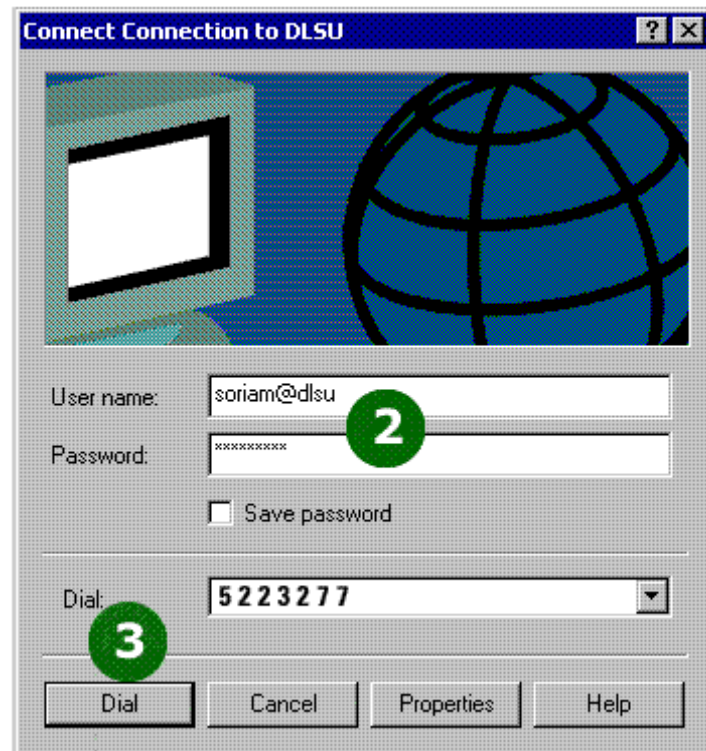
How to connect to DLSU via Networking

1. Double-click the **Shortcut to Connection to DLSU** icon on your desktop.

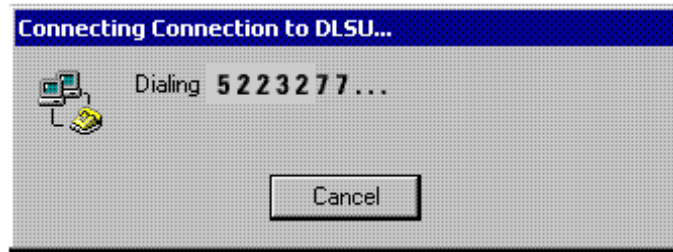


2. Enter **<UserID>@dlsu** as your username, and key-in your password.

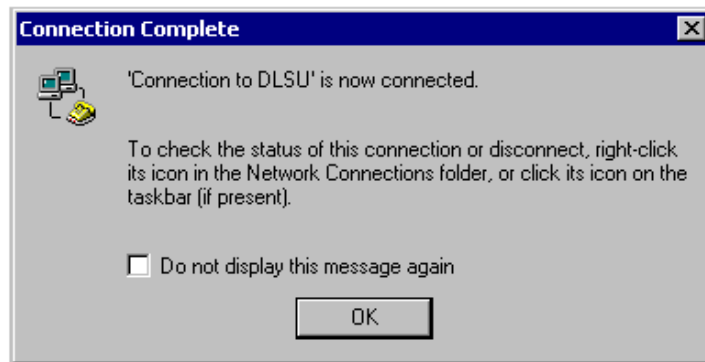
3. Click **Dial**.



When you see this prompt, it means that the modem is dialing.



Note: If the line is busy, please try again.



If you see the **Connection Complete** window, it means that you have successfully connected to **DLSU via PPP**.